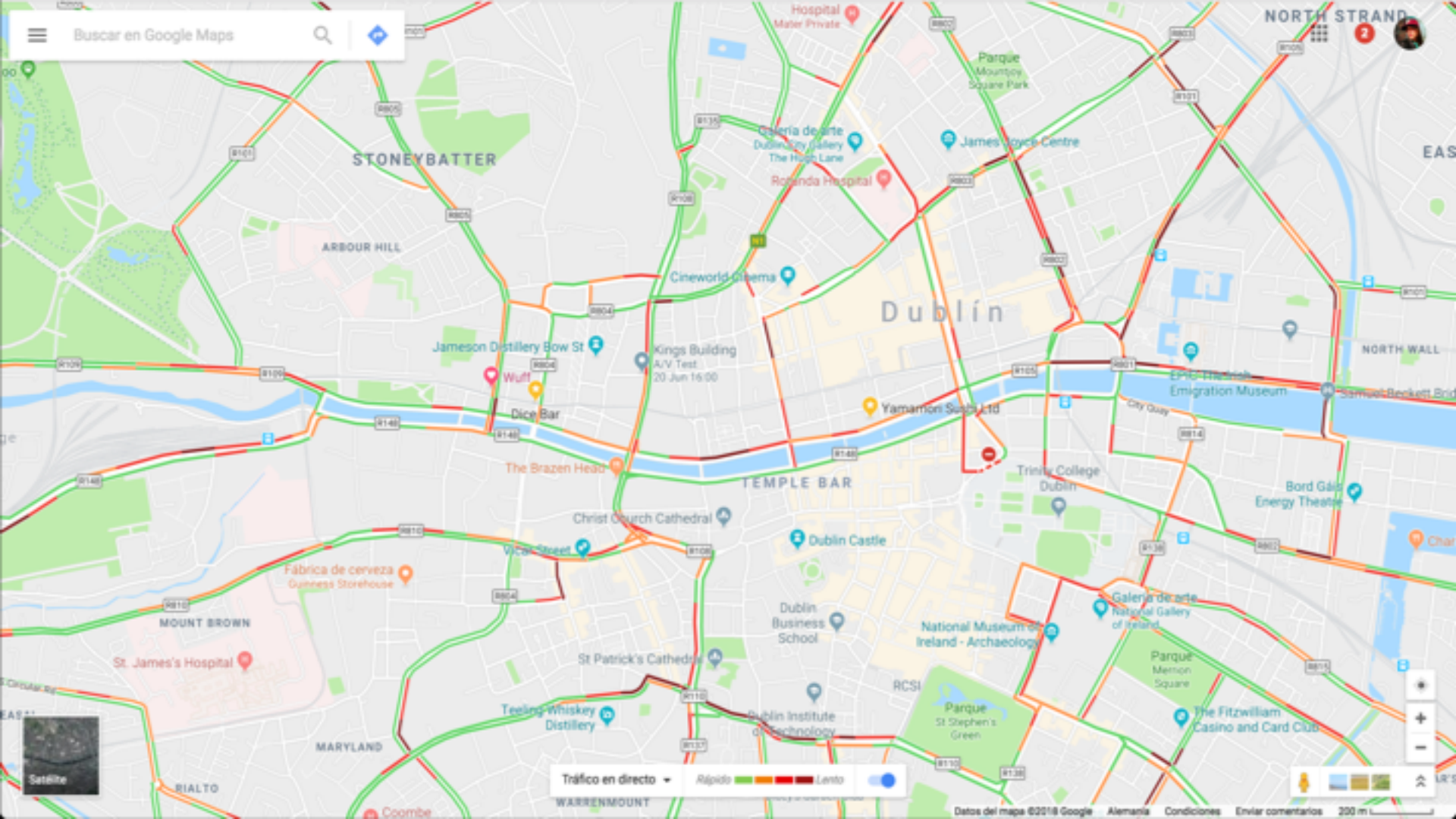






Buscar en Google Maps



STONEYBATTER

ARBOUR HILL

Jameson Distillery Bow St

Kings Building

A/V Test

20 Jun 16:00

Dice Bar

The Brazen Head

TEMPLE BAR

Christ Church Cathedral

Dublin Castle

Fábrica de cerveza

Guinness Storehouse

MOUNT BROWN

St. James's Hospital

MARYLAND

Teeling Whiskey Distillery

St. Patrick's Cathedral

Dublin Business School

National Museum of Ireland - Archaeology

RCSI

Parque St Stephen's Green

Galería de arte

National Gallery of Ireland

The Fitzwilliam Casino and Card Club

Bord Gáis Energy Theatre

Emigration Museum

Trinity College Dublin

Yamamori Sushi Ltd

Cineworld Cinema

Rolanda Hospital

Galería de arte

Dublin City Gallery The Hugh Lane

Parque Mountjoy Square Park

James Joyce Centre

NORTH STRAND

2

EAST DUBLIN

NORTH WALL

Samuel Beckett Bridge

Char



Satélite

Tráfico en directo

Rápido

Lento

Mapa

Datos del mapa ©2018 Google

Alemania

Condiciones

Enviar comentarios

200 m

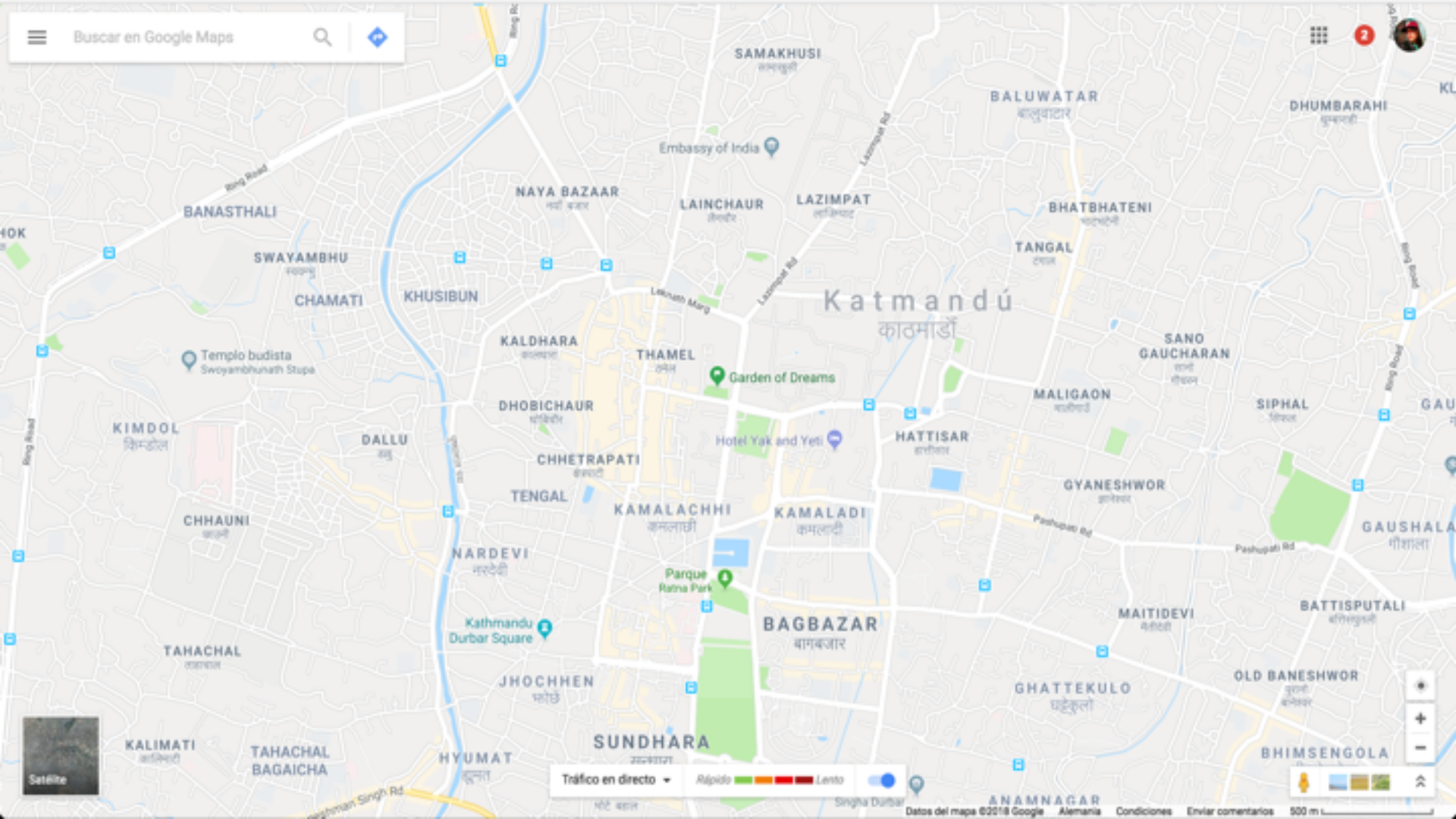




Buscar en Google Maps



2



Katmandú
काठमाडौं

Tráfico en directo

Rápido Lento



Datos del mapa ©2018 Google

Alemania

Condiciones

Enviar comentarios

500 m



Documentation

SEN

Google Maps APIs Documentation

API Picker

[Map Coverage Details](#)

FAQ

Google Maps API Root CA Migration
FAQ

Android APIs

Google Maps Android API

Google Places API for Android

iOS APIs

Google Maps SDK for iOS

Google Places API for iOS

Web APIs

Embed API

JavaScript API

Static Maps API

Street View Image API

Google Places API JavaScript Library

Web Service APIs

Map Coverage Details

[Contents](#)
[Legend](#)

The Google Maps team is constantly working to improve our international coverage. The following table shows the latest coverage details on a country-by-country basis. Some data, such as [public transit](#) routes, are available at a city level and do not appear in this list. Please note that data coverage can change if licensing agreements with the data providers change.

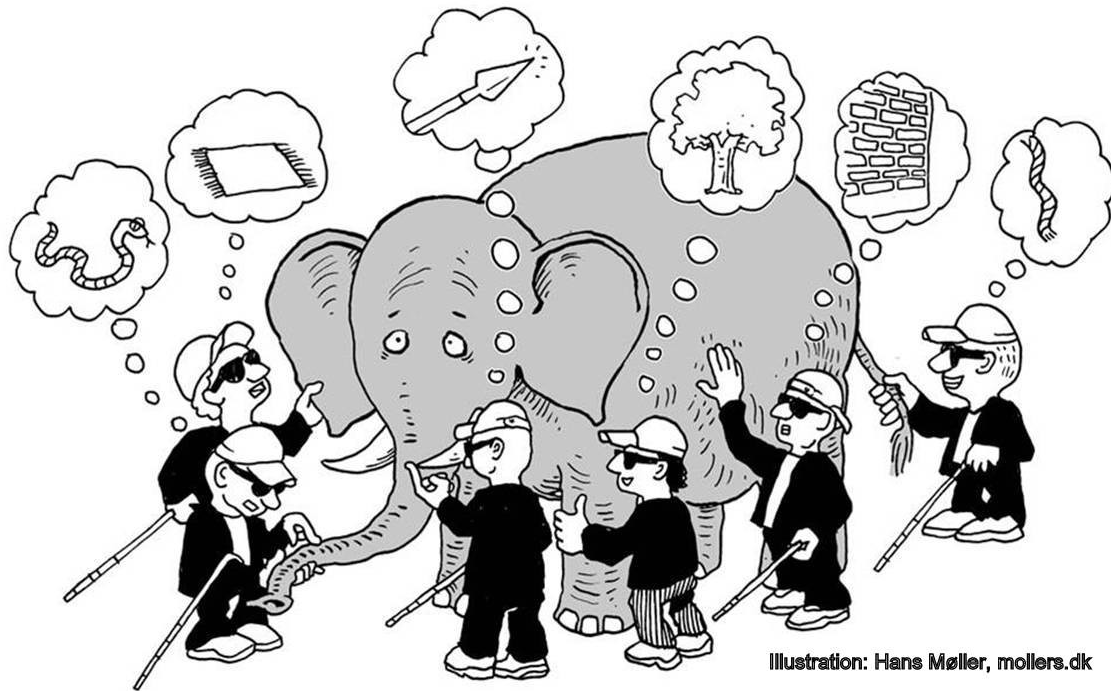
Legend

- The feature is available in the area, with good data quality and availability.
- The feature is available in the area, with approximate data quality or availability.
- The feature is not available in the area, or with low data quality or availability.

nepal

Region Code	Country/Region	Map Tiles	Geocoding	Traffic Layer	Driving Directions	Biking Directions	Walking Directions	Speed Limits
NP	Nepal	●	●	—	●	—	●	○

What does it happen when we don't have enough data?



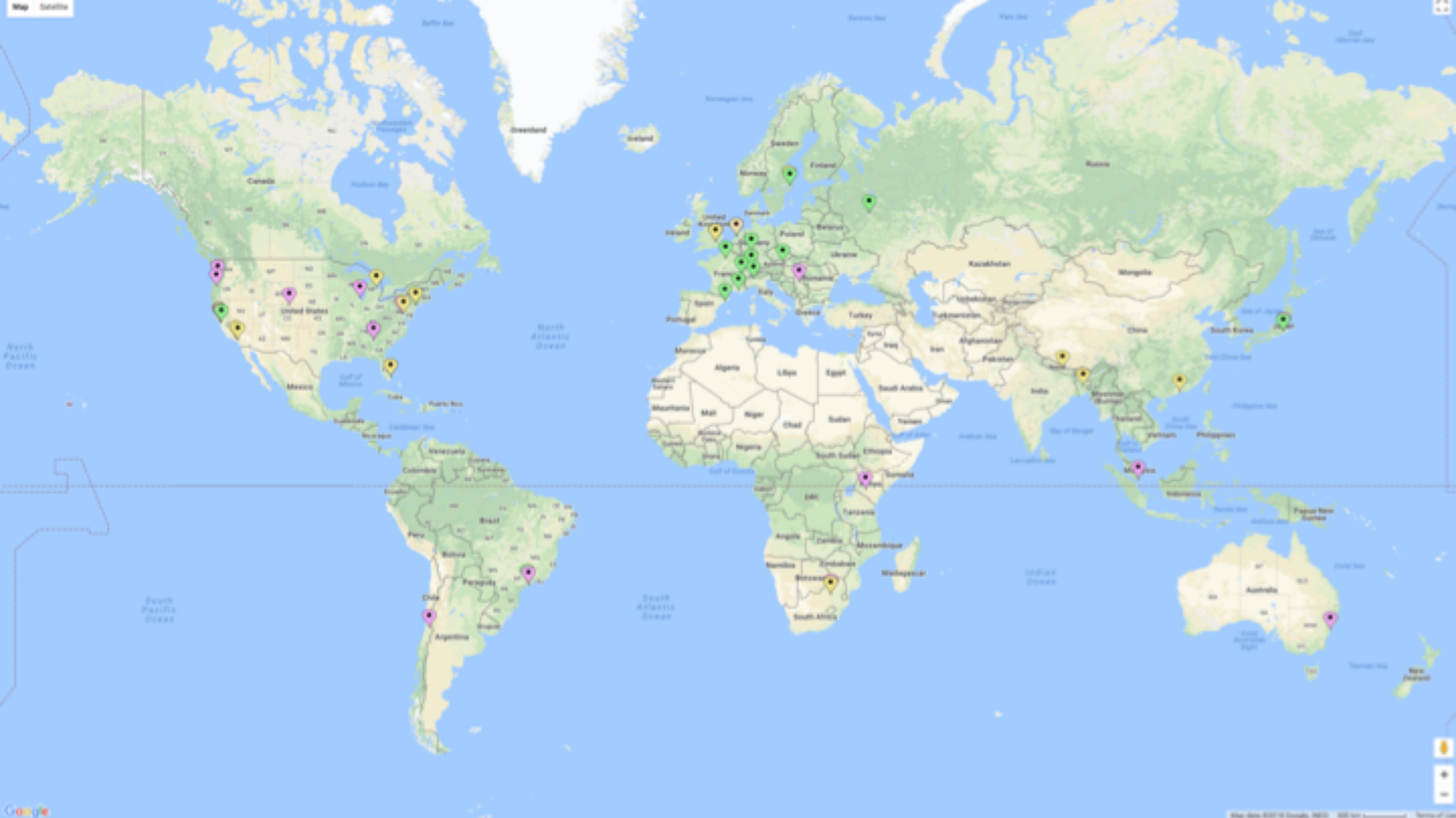
Routing Info Tools for the AP region

Creating better local maps

Sofía Silva Berenguer

Product Manager, Information Services (APNIC)

sofia@apnic.net



In the era of information...

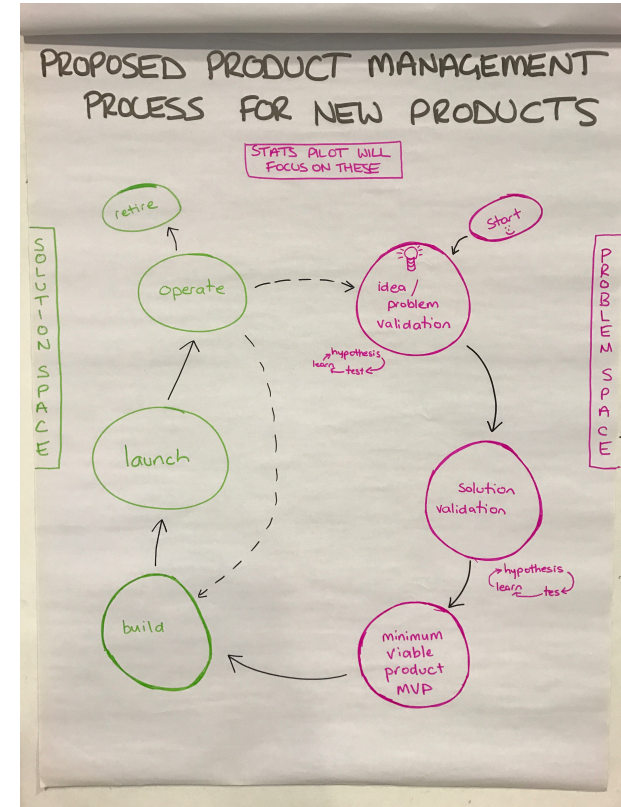
lack of information

is an issue!



We are missing more than routing data...

- We thought we knew what **users needed**
- But we were missing info from the **actual users**
- We detected we need to get better in the **problem space**
- So now we are focusing on **user-driven needs**



APNIC's Routing Info Tools

- We want to have better **local maps**
 - For this we need **more local data**
- We want to offer better **tools** for network operators
 - For this we need to understand **your needs**

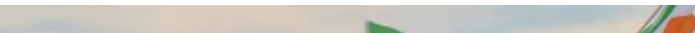
Wrapping up

- We've been **trying to understand the AP region** observing it from far far away.



- We want to create **better local maps** of the Internet to be able to:
 - Detect and troubleshoot issues faster
 - Identify opportunities of better interconnection
 - Understand better the Internet topology
- For this we need **network operators from AP** to share routing data with us.

Wrapping up

- We've been developing products **we** think are useful, but we want to *get better at understanding what is really useful for **you**.*
 - For this we need **YOU** on board!
- 



Olympic silver medal winner Annalise Murphy arrives in Dun laoghaire harbour on a flotilla of boats containing other members of the Irish Olympic sailing team. Photograph: Alan Betson/The Irish Times

Interested in participating?

- Talk to me:
 - sofia@apnic.net
 - Or in person!
- Let me know about:
 - Tools you are currently using
 - Tools you think are missing
 - Your feedback, ideas, comments, etc.
- And let's start creating better local maps and better tools!



A word cloud featuring the phrase "Thank You" in numerous languages and scripts. The words are arranged in a circular pattern around a central speaker icon, which is a white triangle pointing right inside a grey circle. The words vary in size and color, including shades of blue, green, red, orange, and yellow. The languages represented include English (Thank you, thanks, thank you very much, etc.), Spanish (gracias, gracias mucho, etc.), French (merci, merci beaucoup, etc.), German (danke, danke sehr, etc.), Italian (grazie, grazie mille, etc.), Japanese (arigato, arigato gozaimasu, etc.), Korean (gamsahamnida), Chinese (xiexie), Russian (spasibo, blagodaram, etc.), Hindi (dhanyavad, shukriya, etc.), and many others. The word "thank you" is the largest and most prominent in the center.

Yet another BGP data collection project?

- We are aware of existing BGP Data Collection projects
- **But!**
 - Independent efforts
 - No single view of the Internet as a whole
 - Not that many collectors in the AP region
- So... we are working on two initiatives in parallel :)
 - Get more BGP data from the AP region
 - Collaborative Project to Integrate Collected BGP Data (*We need a better name!*)
 - In collaboration with other BGP data collection projects
 - Define a data format and technical solution to integrate the BGP data that is already available